

# OpenJUMP GIS-Exercise

Mock Exercise for acquaintance of OpenJUMP

## SELECTION OF A SITE FOR NUCLEAR POWER STATION

Criteria and Conditions:

Site to be a

1. **State Capital**
2. **Not to be within a radius of 800 km from GONDWANAS**  
(Gondwanas are Coal bearing rocks. Keeping a distance from them makes the plant worth while.. else you can use coal for power as well)
3. **Sites to be within 10 km from sea coast**  
( A port city has its advantages in importing machinery etc)
4. **Within 3 km distance to a river**  
(you need water for industry)

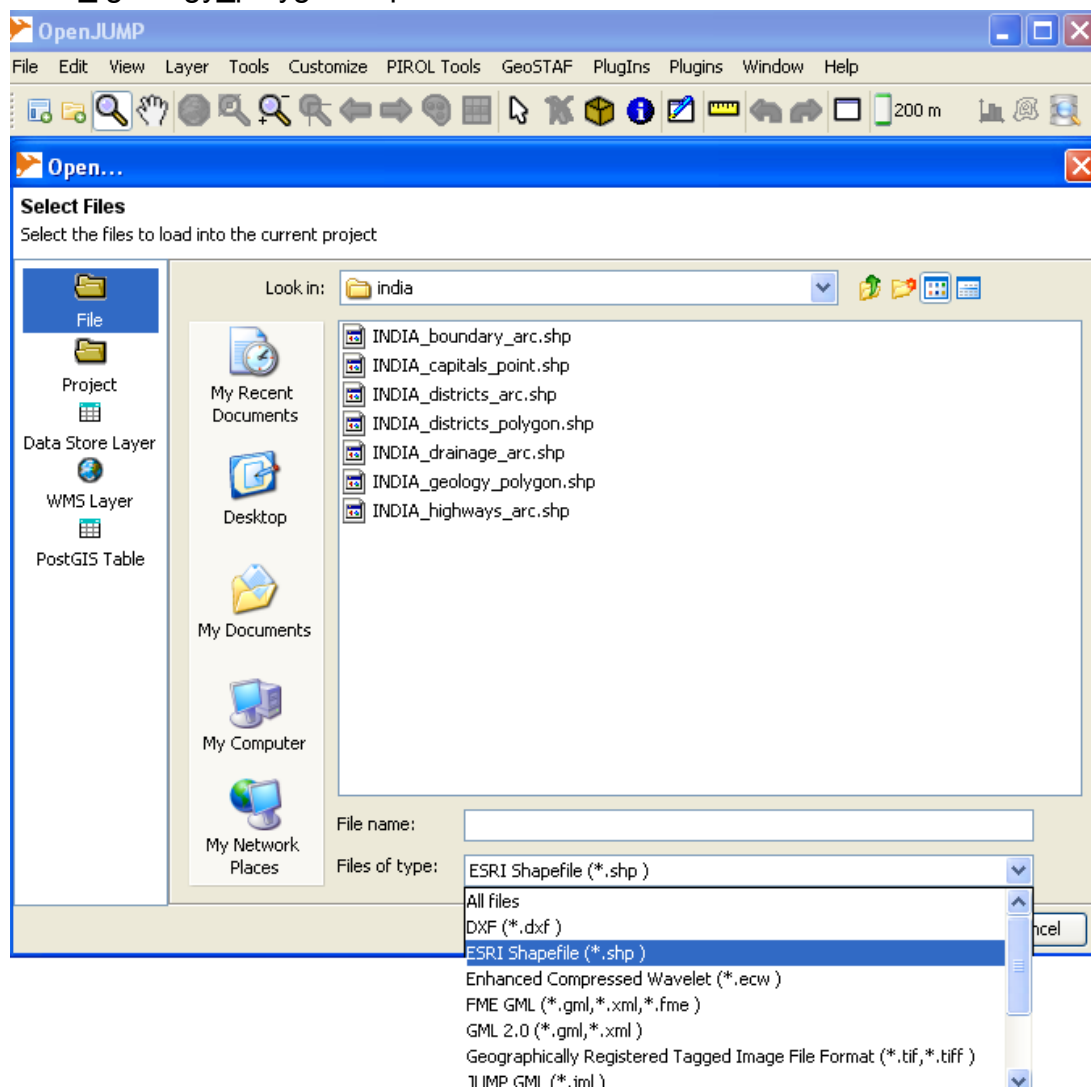
**To begin the exercise:** Goto File>open>click on “ file “icon option>goto filetype>select ESRI shape file>Navigate to India folder>double click>select following shape files by using ctrl button

india\_capital\_point.shp

india\_boundary\_arc.shp

india\_drainage\_arc.shp

India\_geology\_polygon.shp



**Task: Select Gondwana polygons from India\_geology\_polygon.shp**

select India\_geology\_polygon.shp in the layers list,

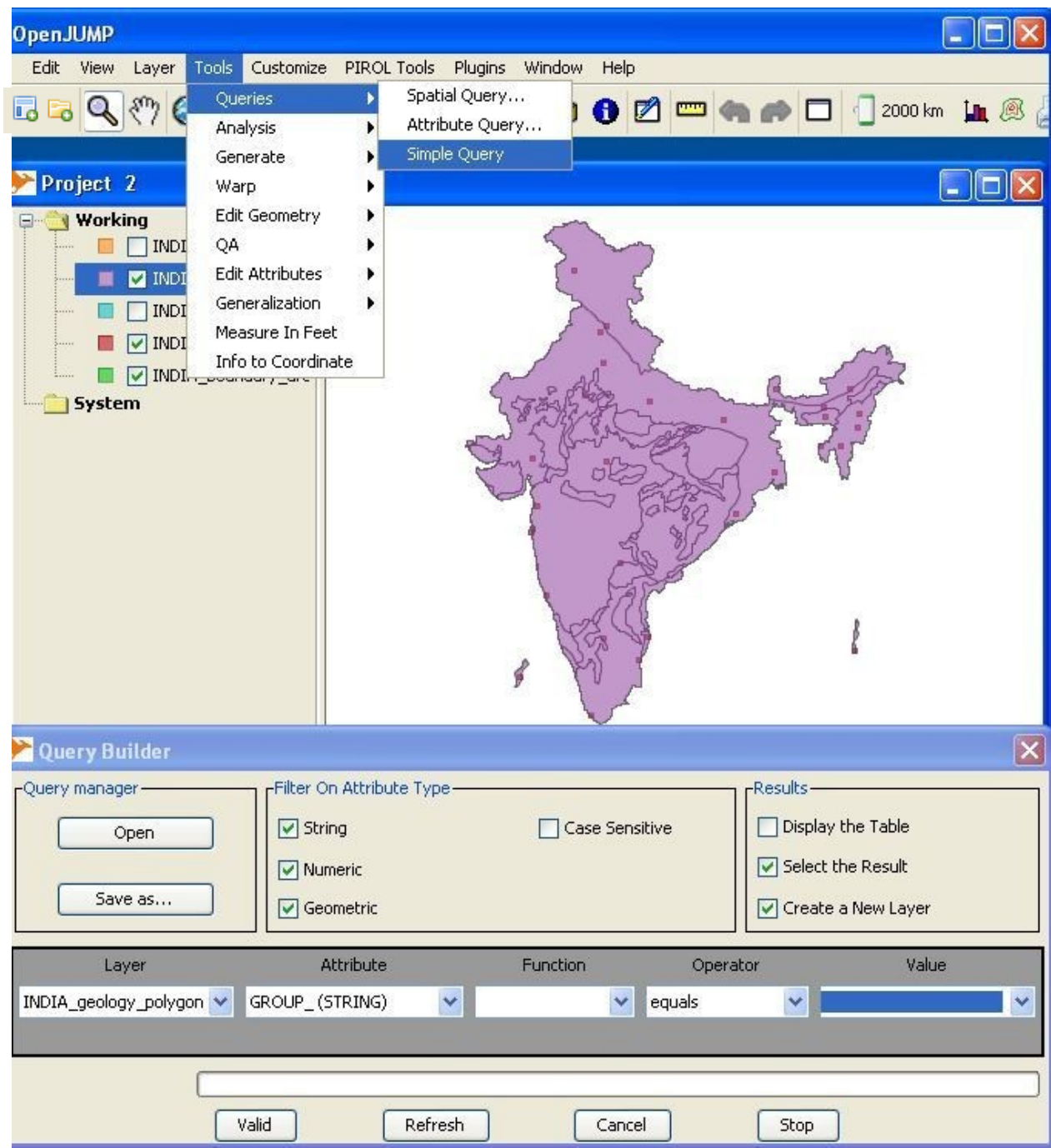
goto Tools>Queries>Simple Query>

select attribute Group=Gondwana and select create a new layer as below and click Valid

A new layer Gondwana is created out of Geology layer.

Deselect India\_geology\_polygon.shp or remove it.

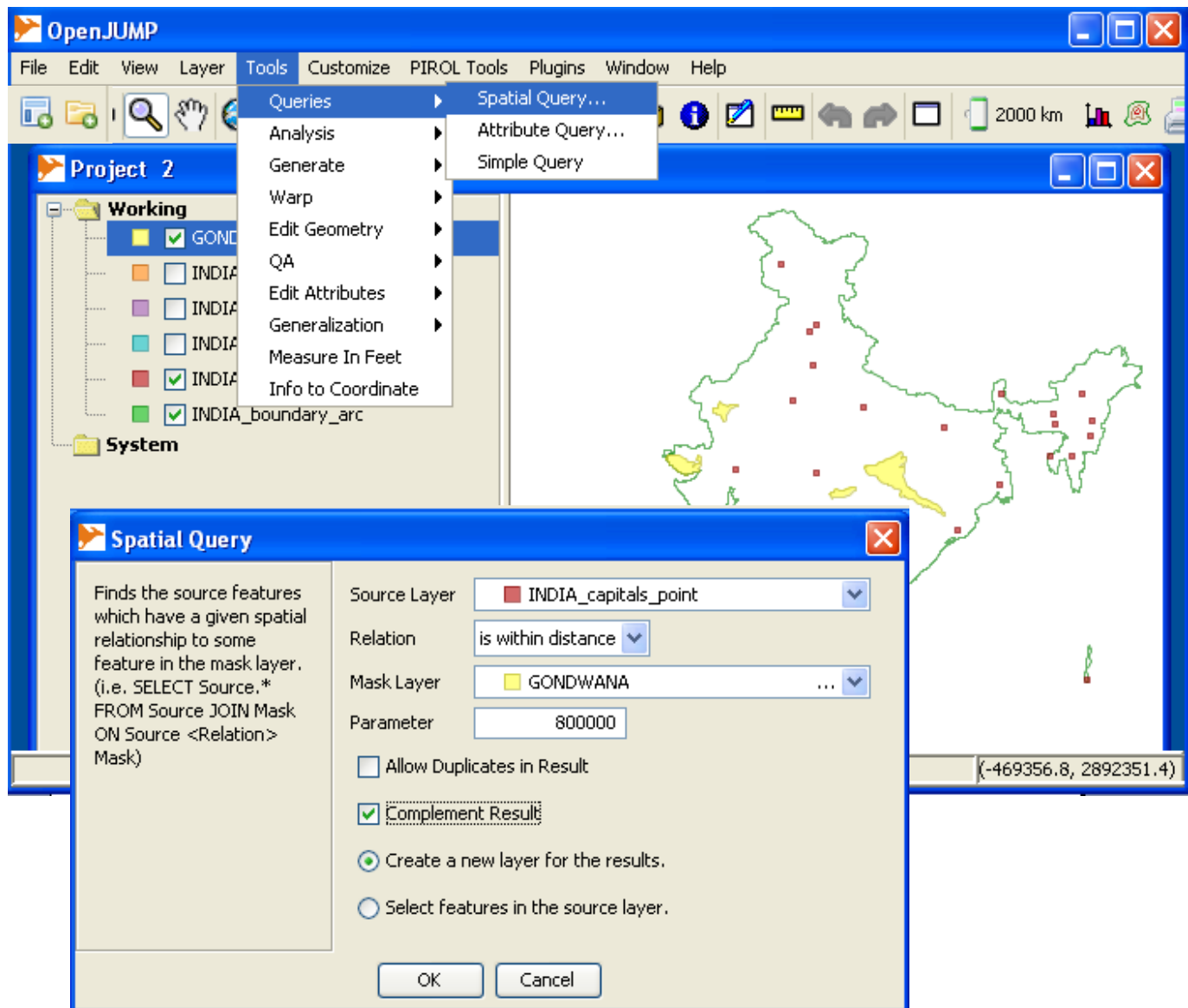
Name the new layer as Gondwana.



**Task: Select Capitals away from GONDWANAS by 800 km.**

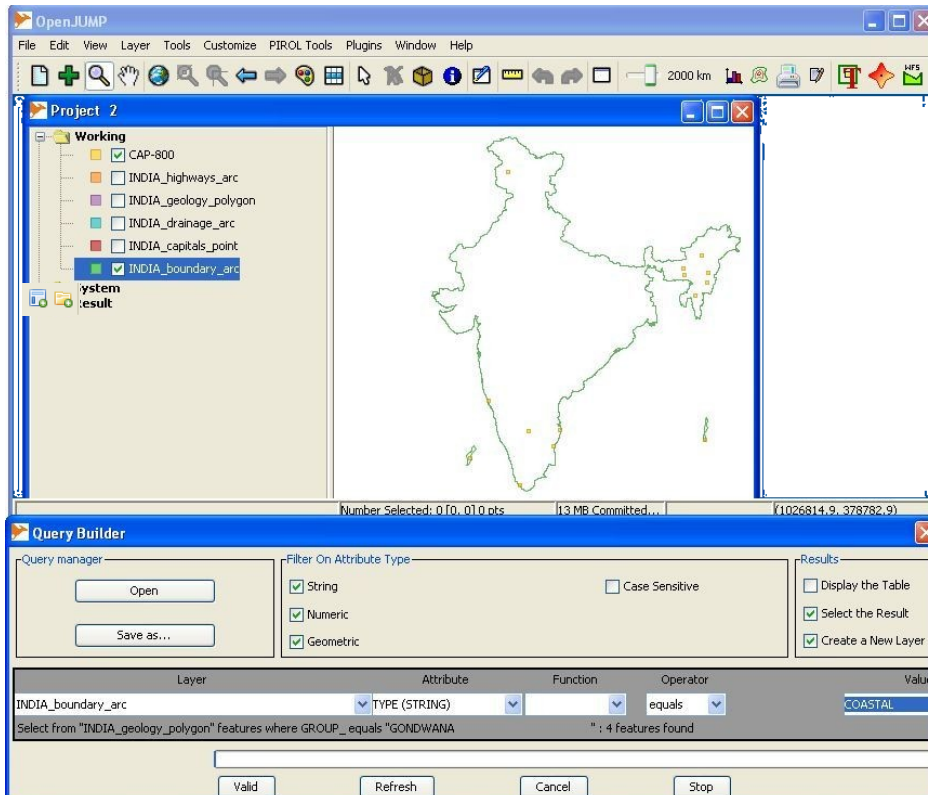
Query --> Spatial Query as in the picture below.

Check tick box 'Complement' for result and make layer 'cap-800'. Shift the layer up



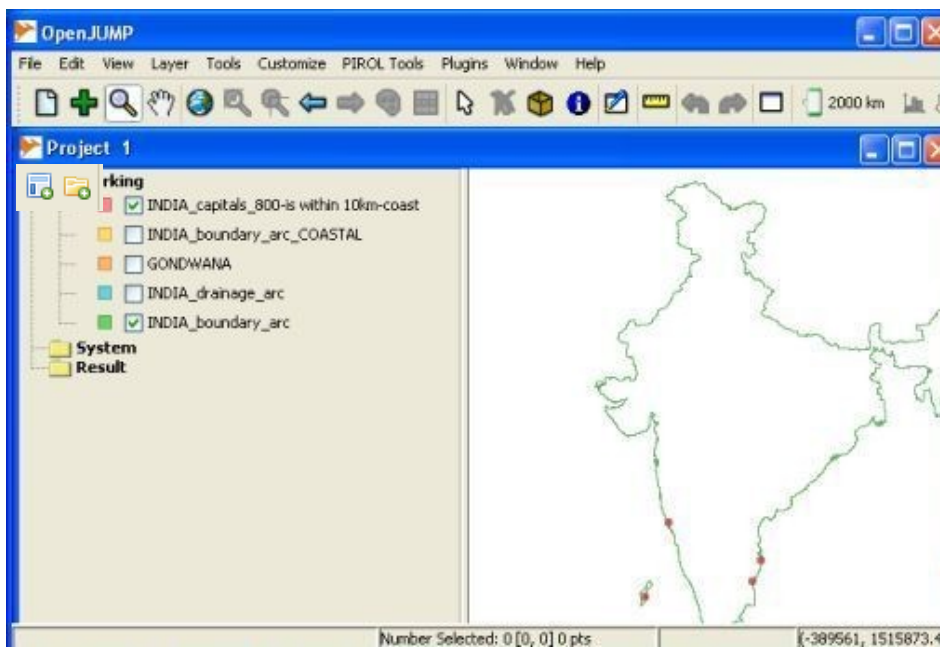
Remove unwanted layers.

### Task: To select Coastal boundary from the India\_boundary.shp



As you have done for creating GONDWANA layer, use simple query, select 'Type=Coast' in the layer india\_boundary\_arc', and name the new layer as 'Coast'. Shift the layer up.

Using cap-800 layer as target run a query to find those within 10 km from 'Coast' and make a new layer 'Capitals'. Remember to uncheck compliment results while doing spatial query.



Now that you have done a good job so far, try and figure out how you will select from layer 'Capitals', those falling within 3km from a river. Use style tool to complete rendering and labeling to get the result.

Cheers; Contributors